

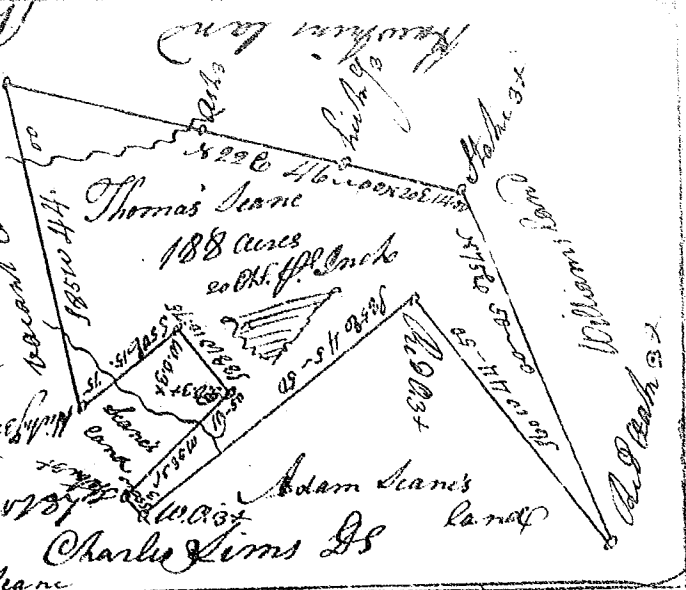
State of S. Carolina Pursuant

(251)

to a warrant from John Thomas Esq. Comm. of Locations. I have admeasured & laid out unto Tho^s Sean, a tract of one hundred & eighty eight acres of land. Situate in 96 District N. Side of Broad River - and hath such shape form and marks Buttings and Boundings as the above plat

Represents. Surveyed the 26th June 1787

Recorded the 26th Oct. 1787



Charles Lewis Esq

State of South Carolina. Pursuant to a

Warrant from John Thomas Esq. Comm. of Locations in 96 District N. of Saluda River: Dated the 29th day of October 1787. I have admeasured and laid out unto William Ware a tract containing of 484 acres of land; Situate in Laurens County on the Branches of Saluda River. Bound on all sides by vacant land. & hath such form and marks as the above plat Represents.

Surveyed the 29th Oct. 1787 Adam C. Jones Jun. Esq

Recorded the 29th October 1787

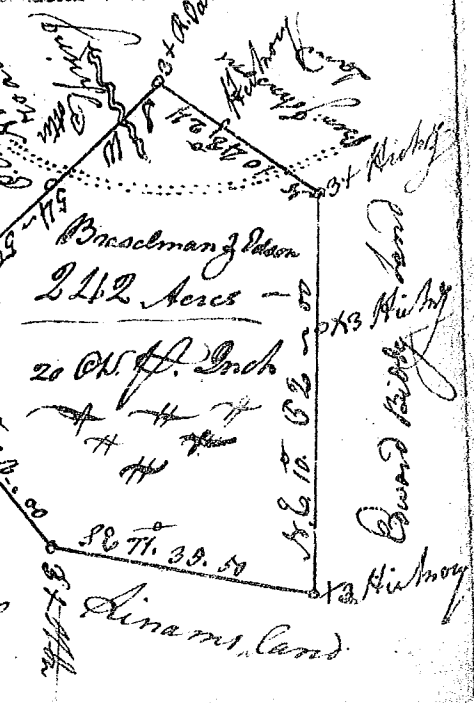


South Carolina Pursuant to a warrant from John Thomas Esq. Comm. of Locations for 96 District N. of Saluda. I have admeasured & laid out unto Peter Braselman & Cushman Eason a tract of 242 acres of land. Situated in said District on the Ninety six road. in the fork of Broad & Tyger Rivers & hath such form marks Buttings and Boundings as the above plat Represents.

Surveyed the 26th Oct. 1787

Recorded the 30th Oct. 1787

138



Braselman & Eason

242 Acres

20 N. ft. Inch

George Kelly Esq